

Geography



Name: _____

Hour: _____

WHAT IS GEOGRAPHY?

- One _____ that you study as _____ of other
- Greek for “ _____ ”
- Geography is the study of...
 - the Earth’s _____
 - the _____ found above, on, and _____ the surface of the planet
 - how people _____ the Earth’s resources
 - how the environment _____ the way people live and how people _____ the environment



_____ Geography

- Studies the planet Earth and its _____ in the universe

Economic Geography

- Studies how people make a _____ from the earth and its _____

Cultural Geography

- Studies the ways _____ live in different _____

Strategic Geography

- Studies how people can make the _____ use of resources to allow them to _____ and to _____ themselves

Geography is both a _____ science and a _____ science

- Social because it is the study of _____ and how they _____ with the environment and with each _____
- Physical because it deals with the _____ and the _____ which make the Earth what it is

The Five Themes of Geography

- _____
 - Example:

- _____
 - A specific location
 - Relative
 - Example: _____



- _____
 - Example: _____

- _____
 - An area of the Earth that is different from other areas
 - Example: _____

- Human and Environment Interaction (_____)
 - How human and their environment _____
 - Example:

- _____
 - Humans _____ from one place to another in order to use their _____ to the greatest extent
 - Example:

What is a SYSTEM?

- A system is a _____ thing made of two or more _____

- In order to _____ properly, the parts must _____ together in a certain way

- All parts must do their _____



- If just one part _____ down, or slows down, or stops _____, the entire system is _____ affected
- Examples of Systems:
 - _____ System
 - And open system _____ operate on its own
 - Example: _____
 - Started by an outside sources
 - _____ System
 - Operates on its _____
 - Example: _____

The Earth is a _____

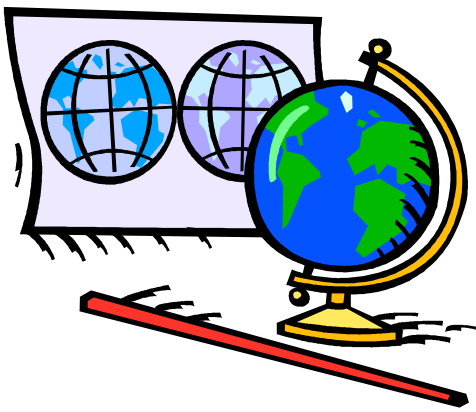
- Everything we do to the Earth's system – _____ and _____ – will affect us in some way
- _____ are part of the system
- What happens to the _____, happens to _____

Our planet is a system of _____ parts – we call them _____

- The study of ecosystem is called _____
- There are three laws in ecology

- Everything is _____ to everything else
- Everything must go _____
- _____
 - Consider the case of garbage....

Maps and Globes



- When _____ want to show what the Earth and its features _____ like, they can make a globe or a map
- A globe is a small _____ of the Earth

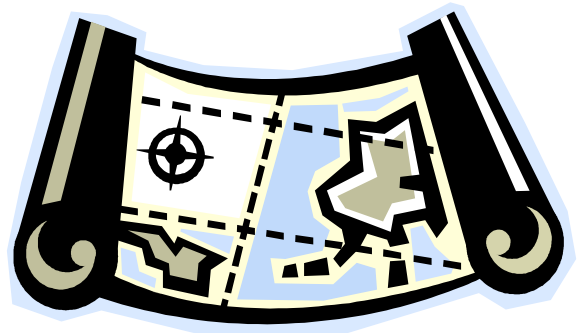
○ Advantages:

- Shows the Earth as it is in _____ life

○ Disadvantages:

- Not easy to _____ around

- A map is a _____ representation of the Earth



○ Advantages:

- Can be _____ and _____ from place to place

- Easily _____
- Disadvantages:
 - There is not a good way to _____ accurately the globe's information onto a flat surface
 - _____
 - _____

TOADS on a LOG

- _____
- _____
 - Direction
 - Compass Reading
- _____
- _____
- _____
 - Size of the area on the Earth
 - _____ of the Earth remain the same, but the map size varies
- _____
 - also known as a key



Longitude and Latitude

- _____ lines used to locate places on a map or globe
- Grid system
 - _____: North-South
 - _____: East-West

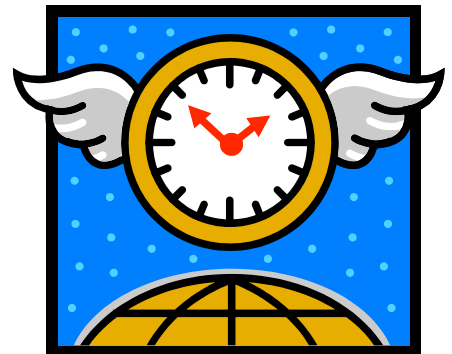
Types of Maps

- _____ Map
 - Shows the location of countries, states, and provinces and the boundary lines separating those



- _____ Map
 - Shows _____ features such a rivers, mountains, oceans, and lakes
 - Physical maps don't change very much over time BUT political maps do change more often.... Why do you think that is? _____

- _____ Map
 - Shows the _____ and _____ in an area
 - Industrial areas, farmlands, and fishing areas
- _____ Map
 - _____
 - Travel
 - Shows types of roads, hospitals, _____, airports, cities, points of interest
- Other types of Thematic Maps
 - _____
 - Climate
 - Vegetation
 - _____ Density
 - Number of people per mile
 - Religion
 - _____



Systems of Time

- We are _____ by time
- Time is really a _____ of the Earth's movements, on its own axis, and around the _____

- The Earth rotates on an imaginary _____ through its _____ from north to south
 - The pole is called the _____
 - The Earth's middle is called the _____
 - It takes the Earth _____ hours to complete one _____
 - A rotation of the Earth is the _____ between one sunup and the next day's sun up
- Many _____ times systems existed until the late 1800s
- When _____ became important, a _____ was needed
- In 1884 “_____” was developed
 - An imaginary north-south line was drawn pole to pole through _____, England called the _____
 - Every _____ degrees on longitude west = _____ hour earlier
 - The Earth has another _____ related to _____ time, which is called a _____



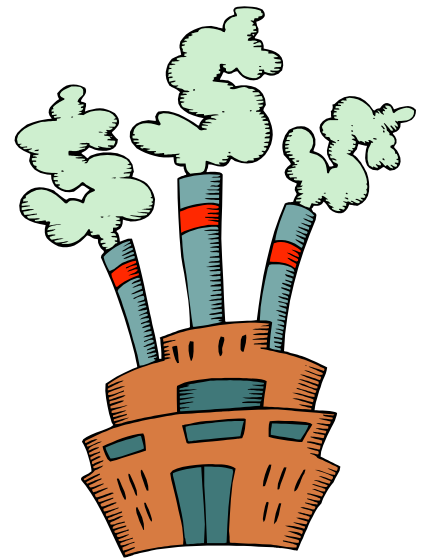
- This is called a _____
 - The Earth revolves _____ the sun
 - One revolution = one _____

Developed and Developing Nations

- Some _____ of the world are blessed with many _____, while others have very _____
- The resources of the Earth are not distributed _____ among nations

Characteristics of a Developed Country

- _____ nations in the world
- Technology
- Industrialized
- _____
- Examples: _____



Characteristics of Developing Countries

- Government control of _____
- Not as _____
- Industrialized
- Developing _____
- Examples: _____

Characteristics of Under-Developed Country

- Large _____
- _____ industries
- Literacy rate _____
- Examples: _____

Strategic Resources

- The word “_____” refers to the planning and _____ of resources

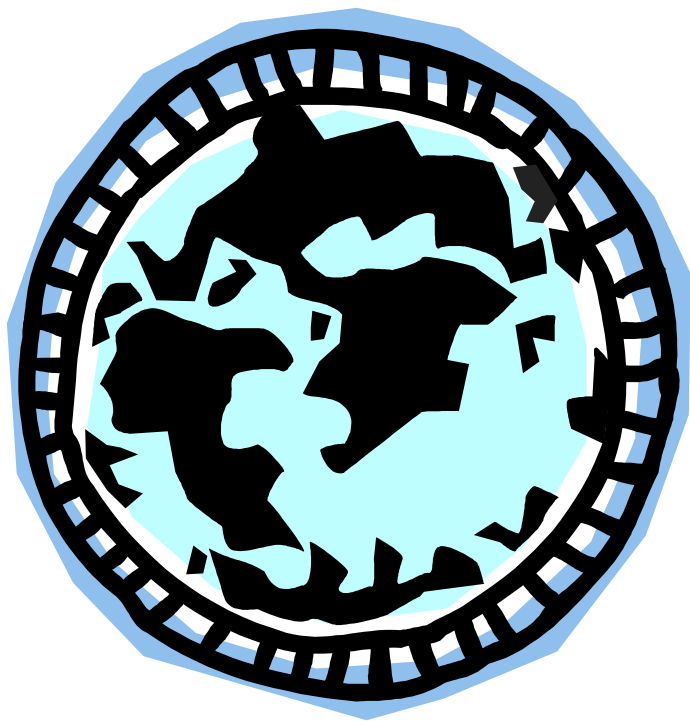
Geographic Interdependence

- _____ of one part of a system on _____ parts of the system
- _____ and _____ makes the world smaller
- Refers to the interdependence _____ and _____ the nations and the people of the Earth
- _____ is connected to everything else
- _____ is connected to everybody else
- For our world to _____, there must be _____

Geography Unit Vocabulary

Vocabulary Word	Definition
Geography	
Physical Geography	
Economic Geography	
Cultural Geography	
Strategic Geography	
5 Themes of Geography	
Open System	
Closed System	
Ecosystem	
Ecology	
Spatial	
Globe	
Map	
Projection	
Longitude and Latitude	
Key or Legend	

Direction or Orientation	
Scale	
TOADS	
Compass	
GPS	
Topography	
Time	
Axis	
Equator	
Rotation	
Resource	
Subsistence	
Developed Nation	
Developing Nation	
Population	
Global Interdependence	



GRADING:

NOTES: _____ / 30 points

MAP: _____ / 10 points

TOTAL: _____ / 40 points